

Maryborough Toyota



TOYOTA

PYRENEES RUSH 4TH

OCTOBER
2014

AVOCA
CELEBRATING
60 YEARS
OF RALLYING

FURTHER REGULATIONS

WWW.CCRMIT.COM
VICTORIAN CLUB RALLY SERIES
ROUND 6



Contents

1.	ENTRY DETAILS	3
2.	SUPPLEMENTARY REGULATION CHANGES	3
3.	SCRUTINY	3
4.	START POINT	3
5.	DRIVER'S BRIEFING	4
6.	LATE RUNNING TIME LIMIT	4
7.	NO WHEEL SPIN.....	4
8.	ODOMETER CHECK.....	4
9.	SERVICING	5
10.	RALLY HEADQUARTERS	5
11.	CATERING.....	5
12.	OBSERVATIONS	5
13.	SAFETY	5
14.	CH Plates/Club Permits	5
15.	CREW CONDUCT	5
16.	APPAREL.....	5
17.	AWARDS	5
18.	ACCOMMODATION	5

MATTRONICS
WIDE FORMAT PRINTERS - SPECIALIST PRINTING

 **Fulton Hogan**



Maryborough Toyota Pyrenees Rush

Further Regulations

Cams Permit Number 314/0510/05

1. ENTRY DETAILS

Your entry details are as listed on the entry list attached with these instructions.

You are required to report at the Avoca Senior Citizens Club from 12:00 hrs onwards, .

2. SUPPLEMENTARY REGULATION CHANGES

Steward

- Change of Steward from Brenda Rea to Brett Roffey

No Wheel Spin Policy

- Refer to Item 7 in Further Regulations

No other changes to Regulations.

3. SCRUTINY

Scrutiny will be conducted on Wednesday, 1st October 2014 between 18.30 and 21.30 hrs (last car report by 2100) at:
Cromwood Automotive, 15 Millicent Street, Burwood. Ph 9808 4820

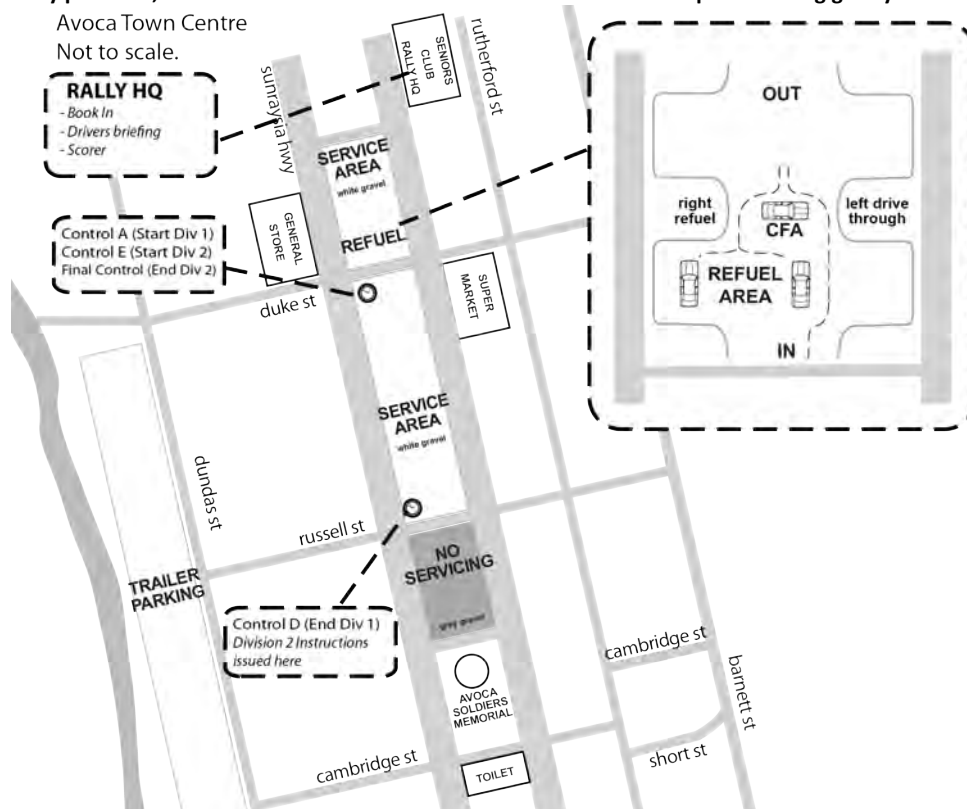
The scrutiny "Pass" tear-off slip must be presented to the book-in official prior to your commencement of the event. The Book-in officials will be located at Rally HQ in the Avoca Seniors Citizens Club.

Entrants attending **Regional Scrutiny** are required to provide the scrutineer with a copy of the Supplementary Regulations for the event.

4. START POINT

The START & FINISH of Division 1 & 2, as well as the Divisional break are in the main street of Avoca (see map)

One service vehicle only per crew, allowed within the Avoca service area. Trailers to be parked along grassy area along Dundas St



The first car is scheduled to leave the start at 1500 and subsequent cars at two minute intervals, the same interval being maintained at the start of all competitive sections.

5. DRIVER'S BRIEFING

Drivers briefing will be held outside the front of the Avoca Senior Citizens club at 1415 hrs. Attendance at this briefing is compulsory for all crews and a service crew member.

6. LATE RUNNING TIME LIMIT

Late Running Time Limit for the event is 20 minutes in Division 1, and 60 minutes for Division 2. For Late Time calculations ONLY, all times will be read to the ELAPSED MINUTE.

7. NO WHEEL SPIN

Stages 2, 3, 4, 5 & 6 will have a "No Wheel Spin" policy in place given the nature of the event and with consideration to officials and forest and municipal authorities. It is prohibited to wheel spin within 50 meters from the start control of any section other than the 1st competitive section of the event. Any reported breaches will be sent to the Stewards, and may be issued with a Penalty:

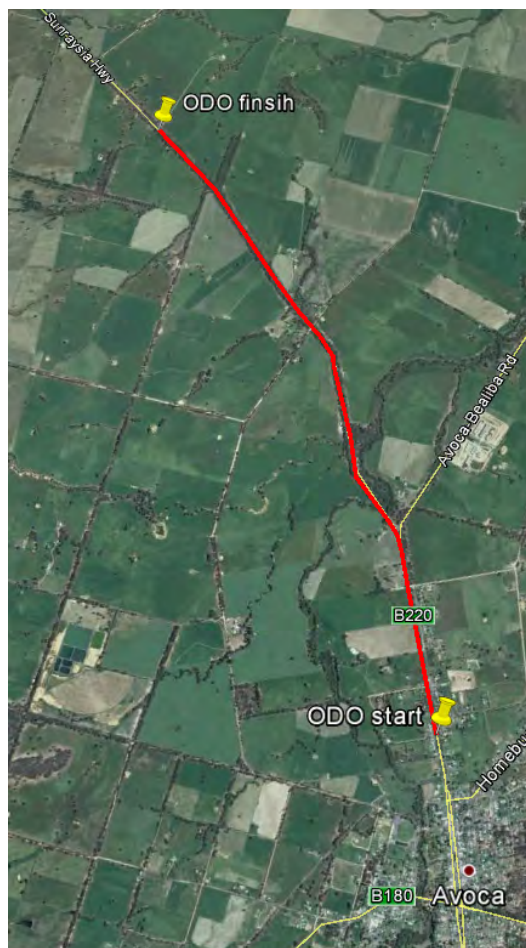
- 1st Offence – Warning
- 2nd Offence – 5 minute Time Penalty Applied to result.
- 3rd Offence – Exclusion

8. ODOMETER CHECK

The odometer check measures 5.78km from the "South West Total Fire Ban District" sign heading north out of Avoca (sign is displayed for south bound traffic), to the Yellow mail box #374 on the right hand side north bound.

The ODO check will be marked with boards marking start & finish for clarity.

See map below:



9. SERVICING

The following is a summary of distances and times related to servicing. Premium Pump fuel will only be available at the Avoca Shell Service Station until around 6pm when the station will be closing. Other refueling will be from your own supplies.

	Service/Refuel Time Approx	Transport	Competitive	Total
Start to Div 1 Break/Service	2 Hours	13.59 km	33.87 km	47.46 km
Div 2 to Elmhurst 1	10 minutes	30.63 km	24.50 km	55.13 km
Elmhurst 1 to Elmhurst 2	10 minutes	50.68 km	35.52 km	86.20 km
Elmhurst 2 to Avoca	N/A	30.58 km	24.5 km	55.08 km
Total		125.48 km	118.39 km	243.87 km

10. RALLY HEADQUARTERS

Rally HQ will be open from 11am until the conclusion of the event. **Rally Headquarters phone: 0437 140 888**
Book in will commence at 12 midday, 4th October.

11. CATERING

Avoca: The main street of Avoca offers a selection of cafés and shops, which will be open during the daylight hours.

Elmhurst: The recreation reserve will have a sausage sizzle and cold drinks etc available from the canteen. Funds from this offering will go towards the yearly Elmhurst Festival Market Day. We ask that you support this with the purchase of a snag or two, and support the locals who are supporting you!

12. OBSERVATIONS

Crews are reminded that Passage Controls will be preceded by a "P" board and Observations will be preceded by an "O" board, both approximately within 50m of the Passage or Observation locations. "P" boards may be used on the incorrect entry to a Passage. This is being done for the safety of the official.

It is the crew's responsibility to ensure that their recorded Observations are signed at the Finish Control for that section. In addition to NRC 4.10(i) Passages may also be a sticker or a stamp.

13. SAFETY

Crews are required to supply and carry their own OK and SOS boards.

The event will supply laminated A4 car numbers to display in addition to the OK / SOS boards. Competitors are to return to event HQ, or hand to Sweep upon retirement. Non return of laminated number may result in a \$20 replacement fee charged.

14. CH Plates/Club Permits

Cars on CH Plates/Club Permits must present their completed log books at Book-in on the day of the event.

15. CREW CONDUCT

You are reminded that officials are volunteers, who have given up their time freely, to help you enjoy your event. Please help them to enjoy their duties, in your conduct towards them, and give thanks to them for coming out and helping out. The organizers will treat any reports of misconduct towards any of our volunteer officials as very serious offense.

16. APPAREL

All competitors are required to wear apparel to a standard listed in Schedule D of the CAMS Manual of Motor Sport and the VCRS series rules 3.4 apparel.

Note that F Grade (Rookie) crews are exempt from the driving suit requirement.

Penalty for non compliance will be exclusion.

17. AWARDS

Awards to crews shall be as listed in the supplementary regulations with the exception that for all Class awards, only 1st driver and navigator will receive an award.

18. ACCOMMODATION

There are numerous accommodation options available in the region. Visit <http://www.visitpyrenees.com.au/> for details.

Bring the family, stay the night, then head out and visit the sights.